

# QuikCam™

## ADVANCED CAM POST-PROCESSING SOFTWARE

QuikCam is an advanced, fully automatic CAM post-processing program for fast, easy conversion of CAD drawings to machine-ready CNC files. QuikCam accepts popular drawing formats including: DWG, DXF, and IGES. By using QuikCam's knowledge-based CNC techniques, even inexperienced users can be assured of producing accurate and efficient CNC programs.

### Feature Overview

QuikCam reads the geometric information directly from a CAD drawing file and automatically develops marking and cutting profiles, assigns lead-in and lead-out motions, and defines the proper cutting sequence for all processes. In seconds, CAD drawings are converted into CNC files, ready for production. Flexible setup parameters and macro-based lead-in and lead-out specifications allow users to automatically apply preferred CNC programming methodology. Because QuikCam uses the geometry that already exists in the CAD file, errors that can occur while re-programming in other CNC systems are eliminated. The program also comes with the powerful editing capability of QC-EDIT, enabling users to easily incorporate application-specific knowledge into CNC files. Corner loops and tabs (stitch cuts) are easily added to any profile.

### Standard Features

#### Lead Under/Overtravel

Improve part quality at the pierce locations by stopping short of, or continuing past, the intersection point of the lead in and lead out

#### Enhanced Error Correction

CAD files are processed in using multiple passes so if geometry errors, such as gaps or overlaps are found in the drawing, the different tolerance levels used in each pass achieves proper geometry reconstruction

#### Automatic Sequencing

User-selectable profile sequencing formats and settings are supported

#### Plot Layer

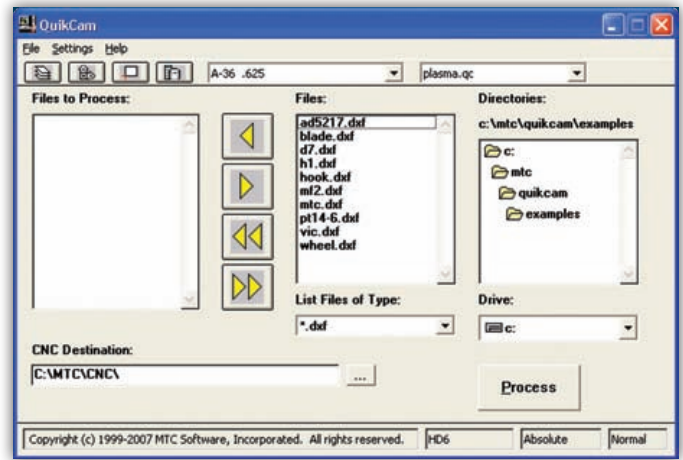
Non-cutting information can be extracted from the CAD drawing for display and plotting purposes only, plus text entities are also recognized and displayed

#### Technology Tables

Output appropriate kerf, feedrate, and other cutting parameters into the CNC file simply by selecting the proper material type and thickness

#### Reduction/Smoothing

Reduce CNC file size and improve part quality by allowing QuikCam to automatically convert or merge lines and arcs together, and control the conversion process by adjusting the reduction parameters to achieve the desired result



### Maximum Arc Setting

Prevent arcs larger than a certain radius from reaching the cutting machine by automatically converting them into line segments

### Profile and Kerf Direction

Automatically produce CNC files that use either the kerf left or kerf right conventions for profile cutting direction and kerf compensation programming

### Standard Formatting Features

#### Code Stepping

A slider-based control allows quick and easy positioning to any location in the file; move step-by-step to verify any motion or process control sequence and fine-tune programs by inserting codes at any location

#### Macro Modules

Define personalized lead-in/out and corner loops that can be used on the desired profiles

#### Corner Loops

Place corner loops at any intersection in order to produce the sharpest corner possible

#### Plotting Capability

Plot any view of a profile with its summary information to any Windows® printer device

#### Initialization Point Functions

Reset the initialization point to any specific location or to any corner of the profile region

#### Move Lead-In/Out Capability

Move lead-in/out to any location on the profile without having to break any entity first, plus right-click on any lead-in/out location to view or change its properties

#### Entity Properties

Right-click to view or edit any entity's properties, including kerf, feedrate, and more

#### Profile Properties

Right-click to view or edit any profile's properties, including cut direction, kerf compensation, and cutting process



### Americas

**United States – Central Operations** mtc@mtc-software.com | +1 (716) 434-3755

**Canada** mtcCA@mtc-software.com | **Mexico** mtcMX@mtc-software.com | **Brazil** mtcBR@mtc-software.com

### Asia Pacific

**Singapore** mtcSG@mtc-software.com | **China** mtcCN@mtc-software.com | **Japan** mtcJP@mtc-software.com

**Australia** mtcAU@mtc-software.com

### Europe, Middle East, and Africa

**United Kingdom** mtcUK@mtc-software.com | **Netherlands** mtcNL@mtc-software.com

MTC Software, Power Made Simple, and Hypertherm are trademarks of Hypertherm, Inc. and may be registered in the United States and/or other countries.

© 8/09 Hypertherm, Inc. All rights reserved. QC-09v2