



ProNest® 2010

NESTING SOFTWARE

Power Made Simple

ProNest is the industry's most advanced nesting software solution and delivers best-in-class **performance** and **reliability**. With ProNest you will experience flexible integration with your 2D and 3D CAD systems, material cost savings from efficient and powerful nesting, and repeatable results from machine-specific setups that deliver optimized cut quality, productivity, and operating costs. ProNest is also **easy** to learn and use. Backed by proven product support from knowledgeable professionals, ProNest has the power to manage the most demanding programming applications for plasma, laser, oxyfuel, and waterjet. ProNest is **Power Made Simple!**

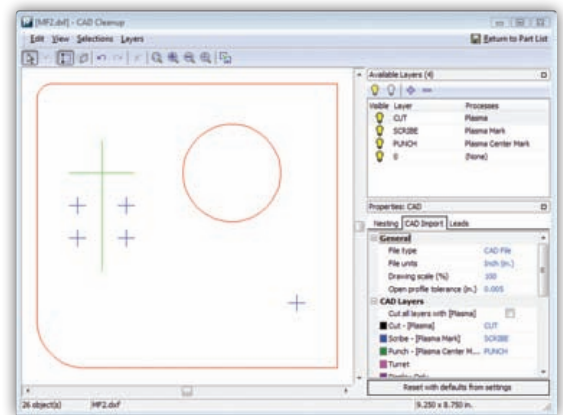
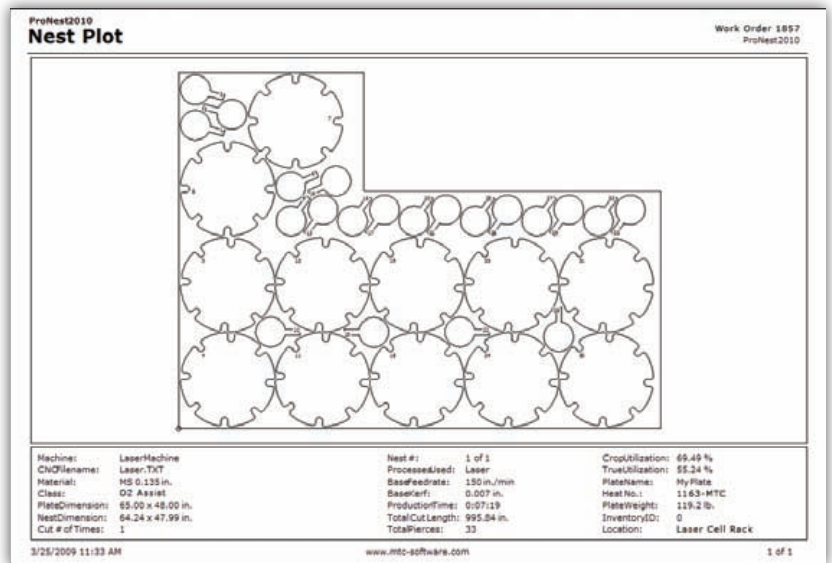
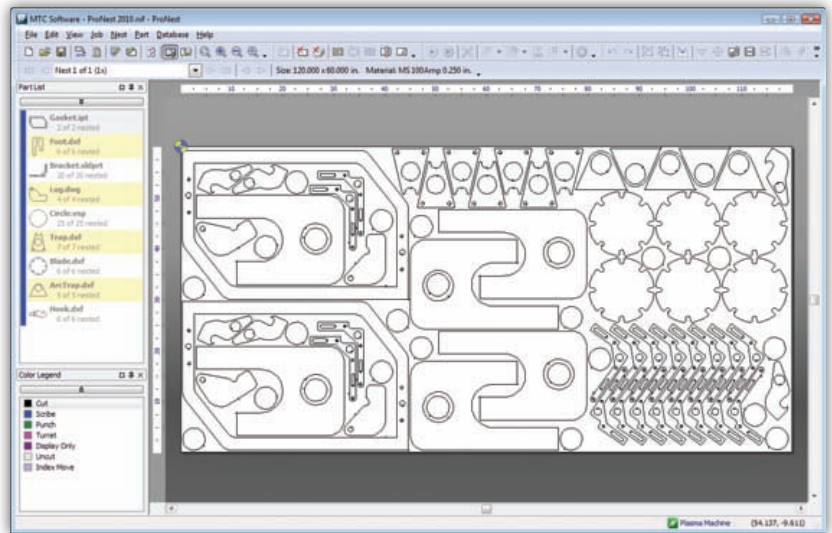
Performance You Can Depend On

ProNest's comprehensive standard feature-set provides users with the **flexibility** needed to efficiently program for multiple machines and cut processes (plasma, laser, etc). For example, tool-pathing of CAD files (lead-in/out style and placement, cut direction and sequence, kerfing, etc.) occurs automatically upon import. Part requirements (material and thickness, quantity, quality, grain restrictions, bevel angle, etc.) may also be assigned automatically. Rotate, bump, cluster, copy, array, and other features allow parts to be manually nested with ease. Achieve repeatable, high quality parts using ProNest's built-in technologies (variable feedrate control, cut conditions, ramping, sub-routines, etc.) and conveniently share job information with external business systems using available data exchange formats and with machine operators via production reports. Through automation of all stages of the nesting process, completing a job using ProNest will take you less time and will give you better results.

You can **increase productivity** with ProNest by utilizing one or more of its optional modules, many of which have been developed for use with a specific cut process. Automate your nesting to save programming time and material by adding ProNest's True Shape Nesting module. Take advantage of the available productivity tools (common line cutting, chain cutting, collision avoidance, etc.) to reduce operating costs. ProNest offers a broad selection of optional modules that will help you **improve profitability** at your manufacturing operation. Select the package that's right for your budget and your business now, then add additional modules later, as you need them.

Our Commitment

MTC Software provides your business with the industry's best software solutions and product support. ProNest, like all MTC Software products, is engineered to help you get the most from your machine investment. By investing in MTC Software, as thousands of other companies have over the past 25 years, you can feel comfortable that you're partnered with a company that measures its success by ensuring yours.





ProNest® 2010

NESTING SOFTWARE

Standard Features

CAD/CAM Import, Conversion, and Part Development

- Import CAD and CNC files (many file formats)
- Import Bill of Materials properties from CAD files
- Import part and plate list information from MRP/ERP
- Variable shape parts library
- Automatic CAD file correction and error notification
- Automatic cut direction, sequencing, and tool-pathing
- Automatic assignment of material-based lead-in/out
- Ability to separate multiple parts from a single CAD file
- Ability to edit/delete layers and entities of CAD files
- Automatic tabbing technology
- Automatic rotation restriction for grain constraint
- Advanced edit function for part modification

Interactive Manual Nesting

- User-defined material database and plate list
- Edit lead-in/out position and style within the nest
- Material-based part, plate, and pierce separation
- Advanced cluster and array functionality
- Part interference detection
- Edge piercing technology
- Interactive and automatic plate cropping
- Multi-head support
- Safe zones for material clamping applications
- Automatic and manual nest sequencing
- Animated cutting sequence simulation
- Material-based process parameters
- Material-based cutting techniques

Costing, Reporting, and Systems Interface

- User-defined production cost parameters
- Automatic part and production cost calculation
- Automatic nest utilization calculation
- Customizable management and shop reports

Code Generation, CNC Output, and Communications

- Flexible CNC post-processor (includes subroutines)
- Automatic CNC code generation, by nest or job
- Pre-piercing, pre-kerfing, and step and repeat
- User-defined advanced CNC output

Optional Modules

ProNest is ideal for use with the cutting processes listed below.

Use the icons provided to identify the cutting process that will typically benefit from that module.

- Plasma
- Oxyfuel
- Laser
- Waterjet
- Punch/Plasma
- Punch/Laser

Automatic Nesting Modules

Pattern Array Nesting						
Rectangular Nesting						
True Shape Nesting						

Productivity Modules

Common Line Cutting						
Advanced Common Line Cutting						
Chain Cutting						
Bridge Cutting						
Collision Avoidance						
Variable Multi-Head Cutting						
Skeleton Cut-Up						
PIPE Parametric Fittings						

Material and Inventory Optimization Modules

Plate Inventory						
Part Inventory and Assembly						
Custom Remnants						
Nest Background Image						
Nesting System Optimization						

3D CAD Interface Modules

SolidWorks®						
Inventor™						
Pro/ENGINEER®						

System Interface Modules

Punch/Plasma or Punch/Laser						
Rotary Bevel						
Rotary Axis						
Drill						
Manufacturing System						



MTC Software, Power Made Simple, ProNest, and Hypertherm are trademarks of Hypertherm, Inc. and may be registered in the United States and/or other countries. All other trademarks are the property of their respective owners.

© 8/09 Hypertherm, Inc. All rights reserved.
PN2010-09v2

Americas

United States – Central Operations mtc@mtc-software.com | +1 (716) 434-3755

Canada mtcCA@mtc-software.com | **Mexico** mtcMX@mtc-software.com | **Brazil** mtcBR@mtc-software.com

Asia Pacific

Singapore mtcSG@mtc-software.com | **China** mtcCN@mtc-software.com | **Japan** mtcJP@mtc-software.com

Australia mtcAU@mtc-software.com

Europe, Middle East, and Africa

United Kingdom mtcUK@mtc-software.com | **Netherlands** mtcNL@mtc-software.com