

Peddinghaus

Process

Plate Combination

Models Supported

All Plate Machine Models

Machine Types

- FPB – punching and cutting
- FDB – drilling and cutting
- FPDB – punching, drilling and cutting

Machine Sizes

- 500 mm (20 inch)
- 1500 mm (60 inch)
- 1800 mm (72 inch)
- 2500 mm (96 inch)

Controls Supported

- Fagor 8025, 8035, 8040
- Siemens



Functions Supported

- Punching
- Drilling
- Plasma Cutting
- Oxyfuel Cutting
- Air Scribe

Did You Know . . .

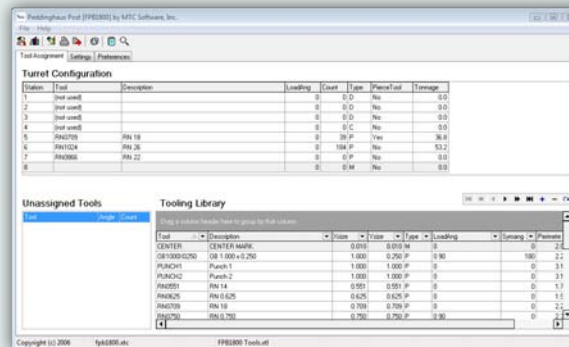
MTC Software can provide one nesting program that will work with most cutting machines and CNC controls; new and old alike.

Interesting Facts . . .

- ▶ Our employees understand the cutting processes you work with
- ▶ Our auto-nesting saves time and material, typically outperforming attempts to manually nest the same job
- ▶ Our products are so easy to learn we can install the software and train a new customer online, the same day

Support Summary

MTC Software's advanced nesting system, ProNest, offers a machine setup "plug-in" that provides CNC program development capability for all Peddinghaus plate machines. ProNest provides complete support for all Peddinghaus machine functions; including various cut processes, drilling and punching as well as automating the control of roller clamps and the drop table. ProNest may also be used to develop CNC files for other machine formats including laser, waterjet, plasma and oxyfuel; making it the single software solution of choice for any Peddinghaus plate machine user.



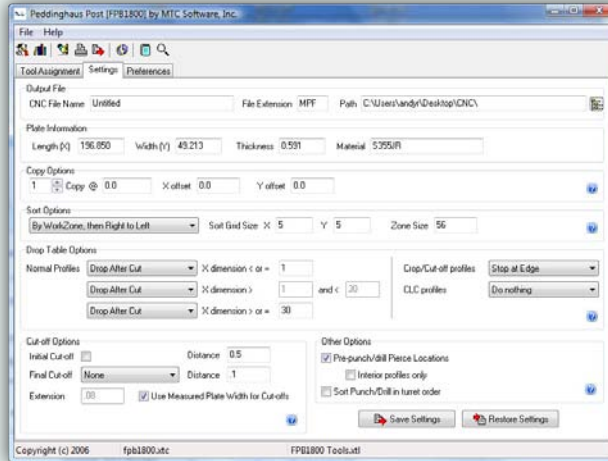
Programming Time Savings

ProNest offers unsurpassed ease of use and automates much of the programming process, providing for significantly reduced programming times. Some examples include:

Peddinghaus continued

Peddinghaus continued

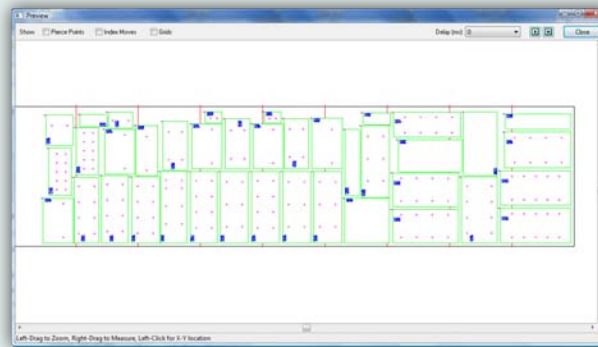
- DSTV files from structural steel programs may be imported to ProNest in batches using the import function, automatically assigning Material Thickness, Part Mirroring, Common Line Cutting, and other part and job parameters
- Ability to automatically detect hole diameter and shape, so all punches and drills can be drawn on the same CAD layer as cut profiles in the part drawing
- Tooling Library and Turret configurations for Punch / Drill processes with automatic notification of holes on the nest that have not been assigned tools plus an automatic count of the number of holes produced with each tool
- Tooling Report listing the Punches and Drills used, number of cycles, the load angle and tonnage (for punches), as well as plate material grade, thickness and size, plus estimated production time.
- Work zone capability with auto-cropping of the plate between zones
- Different Stop or Drop Table options for differing profile sizes and skeleton cut up paths
- Automated Safe Zone feature to prevent nesting into the “dead zone” at the end of the sheet
- Copy & Repeat option for “strip processing” where the edges of the plate are utilized
- Preview of sequenced paths to verify processes prior to creating CNC file



Productivity and Cost Savings

Machine productivity and production costs are improved when using ProNest to run Peddinghaus equipment. The program has embedded process knowledge that helps optimize part processing on Peddinghaus machines, including:

- Custom scribe font allows scribing to be completed without vertical Z-axis movement of the head
- Multi-part Common Line Cutting
- Automatic Pre-Drill/Punch of cut profile pierce points to reduce consumable usage
- Skeleton Cut Up in sequence with all parts so that the Skeleton is cut up just after the parts are cut in a zone as the entire length of the sheet is processed, ensuring maximum optimization of parts and skeleton cut up
- Support for zone sequencing of all nested parts to ensure that all punch, drill and scribe operations are performed in a given zone before the parts are cut and dropped
- Part-by-part sequencing supported for applications where high accuracy is required
- Automatic placement of leads to the left side of each part during nesting so that the majority of the part is over the drop table when complete
- Available additional crop lines to trim front and back of sheet
- Optional multi-part Common Line Cutting and Bridge Cutting reduce scrap and pierces and extend consumable life



MACHINE BRIEF

For More Information

Learn about MTC Software programming solutions that can help your company improve productivity and part quality, plus increase profitability.

Visit our website at www.mtc-software.com or call your local office.



Americas

United States
Worldwide Headquarters
+1 (716) 434-3755
mtc@mtc-software.com
Canada
mtcCA@mtc-software.com
Latin America
mtcLA@mtc-software.com

Europe, Middle East, Africa

United Kingdom
mtcUK@mtc-software.com
Germany
mtcDE@mtc-software.com

Asia Pacific

Australia
mtcAU@mtc-software.com
China
mtcCN@mtc-software.com
Singapore
mtcSG@mtc-software.com

MTC Software, Power Made Simple, and ProNest are registered trademarks of MTC Software, Inc. in the United States and/or other countries.

©2008 MTC Software, Inc. MB/PED-08v1